



Western Association of Fish and Wildlife Agencies • www.wafwa.org

ENROLLMENT OPPORTUNITY

for private landowners interested in wildlife conservation

Submit Interest
by Oct. 15th

Under WAFWA's Oil & Gas Candidate Conservation Agreement with Assurances (CCAA) for the lesser prairie chicken, new land enrollment is now being accepted into the conservation program.



"An opportunity to help restore and enhance native grasslands of the Southern Great Plains."

Enrollment Overview

WAFWA is offering a **sign-up incentive** and **annual payments** under a voluntary 10-year agreement to implement a management plan designed specifically for your property. Management plans are designed to maximize habitat value while improving the long-term sustainability of your agricultural operation or other goals you have for the property.

Private landowners interested in conservation that have at least 160 acres located within a Conservation Priority Area may apply!

Eligibility

Private or Tribal ownership of land at least 160 acres in size, located in a Conservation Priority Area, which is not currently enrolled in a federal conservation program (unless expiring within the year). It is not a requirement to be an agricultural producer (farmer/rancher). Tenants or lessee of the land must have owner permission.

Ranking

Applications will be biologically ranked by criteria such as the size of offer and location, with higher priority given for occurrence in a targeted area (see map). Higher priority is also given to properties that could benefit from cost-effective **habitat restoration**, such as mesquite or red cedar removal, reclamation of inactive well pads, utility lines or roads, and where cropland/fallow fields can be restored.

WAFWA pays for the restoration!

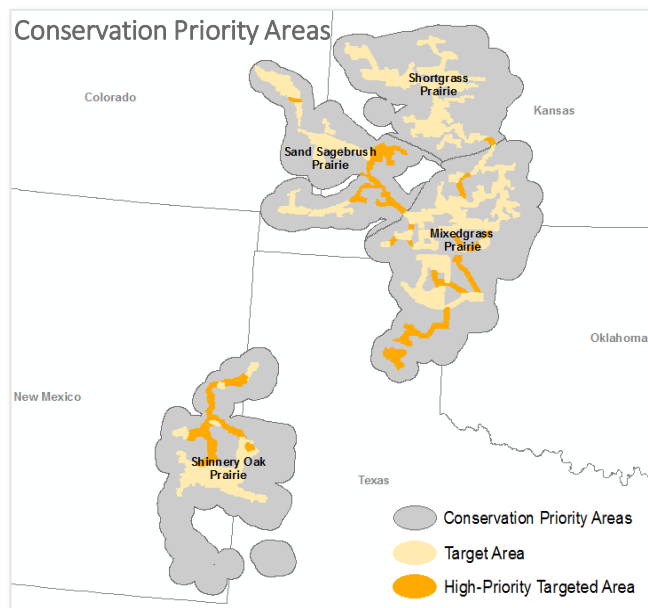
Payments

Sign-up Incentive. A one-time payment of \$5.00 per enrolled acre is paid after signing a 10-year agreement to participate.

Restoration Payment. A one-time payment upon completion of restoration, as planned in your management plan, to cover the cost of the effort.

Management Payment. Annual payment made in the fall based on the property location, size, and quality of habitat provided (field verified).

Payments increase as habitat improves!



Check your location in our interactive map: www.sgpchat.org

Technical Assistance

WAFWA's Technical Service Providers work with you to collaboratively develop the management plan and they can assist along the way to ensure a successful conservation effort.

Application

The current sign-up period closes **October 15th, 2023**. Applications will be notified of WAFWA decision by November 15th, 2023.



Apply online at
<https://arcg.is/9mSCX>

For questions, please contact the LPC Program Director, Chanda Pettie at 719-207-5053 or chanda.pettie@wafwa.org.