



Required Conservation Measures for Industry Participation

WAFWA's Oil and Gas Candidate Conservation Agreement with Assurances for the lesser prairie-chicken (CCAA)

Conservation measures (CMs) aim to conserve and enhance the survival of the lesser prairie-chicken (LPC) and its habitat. The following measures are voluntarily agreed to by industry participants as a term of their agreement for enrollment in the CCAA.

Projects occurring within 1.25 miles of an active lek¹ or where no recent lek survey has been conducted:

These measures apply where there are known active leks, or where a lek survey has not been conducted in accordance with the LPC survey protocol within the previous 5 years (i.e., if there is no survey then it is assumed to have a lek). Visit www.sqpchat.org for known lek occurrence and to identify surveyed areas. Participants may conduct surveys at any time to refine where measures apply.

All Human Activities (a.k.a Timing Restrictions) (XII (C)(2)(a)). For non-emergency operations², construction, and maintenance activities, where humans are present, that **cannot be avoided and must occur** during March 1st - July 15th, restrict activities between the hours of 3:00 am and 9:00 am.

Emergency Operations ((XX(B)(3)). For emergency operations² that occurred within 1.25 miles of an active lek between March 1st - July 15th between the hours of 3:00 am and 9:00 am, the participant will report the occurrence to WAFWA within 30 days of if the event.

Noise Restrictions (XII (C)(2)(b)). Institute noise abatement year-round for new facility operation construction (post-construction operations (post-drilling, post-completion, and post-recompletion). Noise from new facilities shall not exceed 75 dB when measured 30 feet in any direction, at any point, from the facility boundary.

Seismic Activity & Extensive Off-Road Travel (XII (C)(2)(c)). Seismic surveys and similar activities that require extensive off-road travel shall not be conducted in rangeland or planted grass cover during the lekking nesting and brooding season (March 1–July 15) and lek surveys shall be required in CHAT categories 1-3 prior to any breeding season seismic surveys. Subject to exception in Section XII(C)(2)(c).

Projects occurring within 1.25 miles of an active lek¹:

Distribution Lines (XII (B)(1)(b)). Bury new distribution lines within 1.25 miles of an active lek. Otherwise, justification must be provided to and approval obtained from WAFWA prior to construction of such new distribution lines.

Projects occurring within 0.25 miles of an active lek¹ or where no recent lek survey has been conducted:

Fences (XII (B)(2)(d)). Install 'WAFWA approved' fence markings along new fences, associated with the project, that are under the control of the enrolled Participant. This helps prevent bird collisions by making the wires more visible.

Applies to all projects occurring within LPC habitat (CHAT 1-3):

Travel Restrictions (XII (B)(2)(e)). During the LEPC breeding season (March 1-July 15), minimize traffic volume, control vehicle speed, control access where feasible, and avoid off-road travel within focal areas and areas identified as high probability lek and nest habitat by the CHAT.

Herbicide Use (XII (A)(2)(d)). Minimize use of herbicide treatments and limit this use to the project footprint or right of way. Where practical and applicable, utilize an herbicide that is targeted for specific use and spot treatments as opposed to a broadband herbicide and broadcast treatments. Apply in conditions that minimize drift.

Electric Transmission Lines (XII (B)(2)(b)). To minimize the transmission line footprint, utilize mono-pole construction for new electrical transmission lines within CHAT categories 1-3.

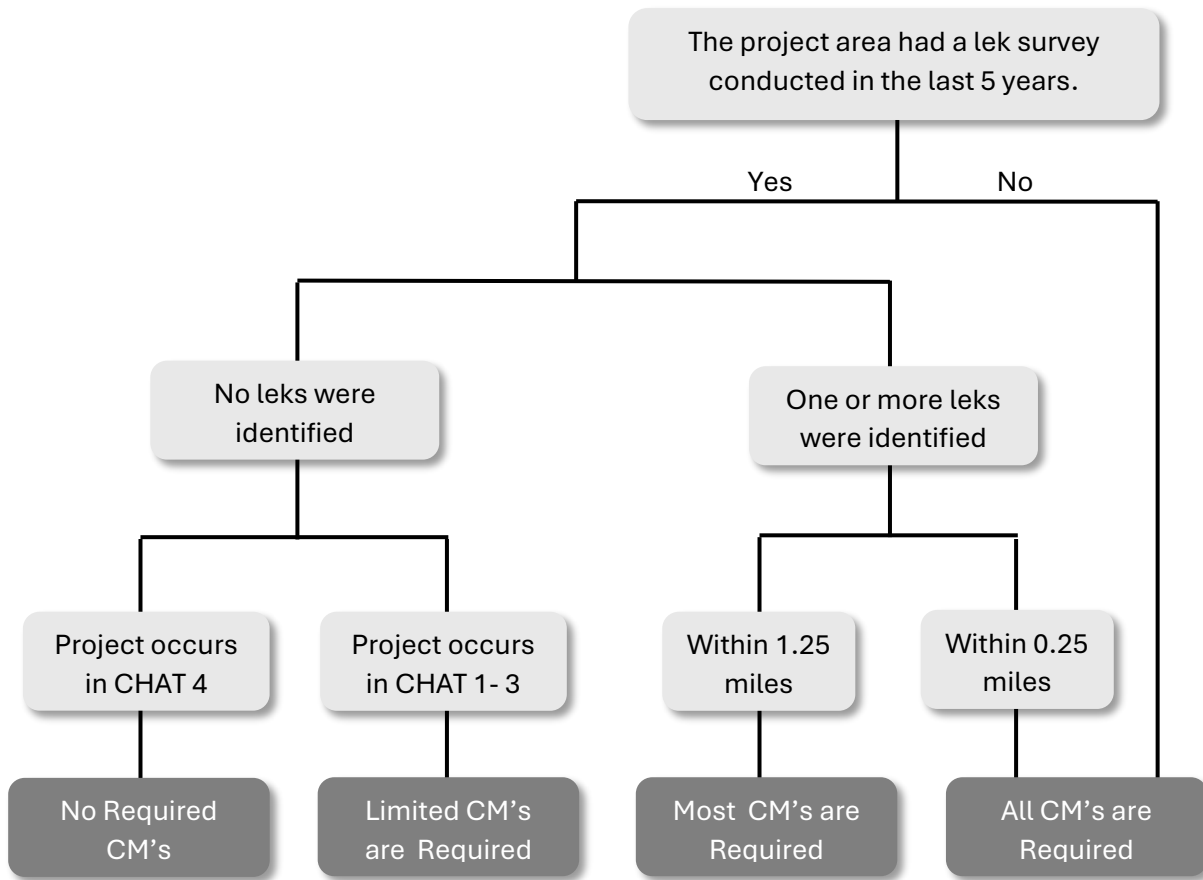
Water Containment (XII (B)(2)(g)). Provide 'WAFWA approved' escape ramps in exposed, human-made water containment sources on Enrolled Property under the control of the Participant.

Seismic Activity & Extensive Off-Road Travel (XII (C)(2)(c)). Lek surveys shall be required in CHAT categories 1-3 prior to any seismic surveys, or similar activities that require extensive off-road travel, occurring during the breeding season (March 1-July 15).

¹ Active leks – leks that have been active at least once within the previous five years.

² Emergency operations are those activities unexpectedly and urgently required to prevent or address immediate threats to human health, safety, or property; the environment; or national defense or security.

Diagram depicting when Conservation Measures (CMs) are required.



Visit www.sgpchat.org for an interactive map of known active lek occurrence, and to identify lek surveyed areas and CHAT category locations.