



Lesser Prairie-Chicken

Oil & Gas Candidate Conservation Agreement with Assurances

Biologically-based

MITIGATION FRAMEWORK

The Oil & Gas Candidate Conservation Agreement with Assurances (CCAA) for the Lesser Prairie-Chicken (*Tympanuchus pallidicinctus*) is a voluntary conservation strategy that establishes a biologically-based mitigation program administered by WAFWA and permitted by the U.S. Fish and Wildlife Service. Established in 2014, the CCAA is a partnership between the states of New Mexico, Colorado, Kansas, Oklahoma and Texas, the oil and gas industry and private landowners.



Industry's Commitment
Avoid, Minimize & Mitigate Impacts on

5.7 million
Acres

10-Years of Accomplishments

Avoided Impacts
27,142
Habitat Acres

I. Avoid Habitat Impacts

Oil & gas projects have an impressive 58% collocation rate with existing development to avoid new impacts to habitat.

High Quality Habitat
75%
Avoidance Rate

II. Minimize Impacts to High Quality Habitat

When avoidance is not possible, projects are strategically located in low-quality habitat to minimize the effect on high-quality habitat.

Mitigated
19,448
Habitat Acres

III. Mitigate Habitat Impacts

Remaining impacts are offset (mitigated) by the CCAA's conservation efforts at a 2:1 ratio to ensure a conservation benefit.

Landscape-Level

Uniquely addresses impacts to habitat quality and quantity across the species range

Collaborative

Partnership of the U.S. Fish and Wildlife Service, WAFWA, oil & gas companies and private landowners

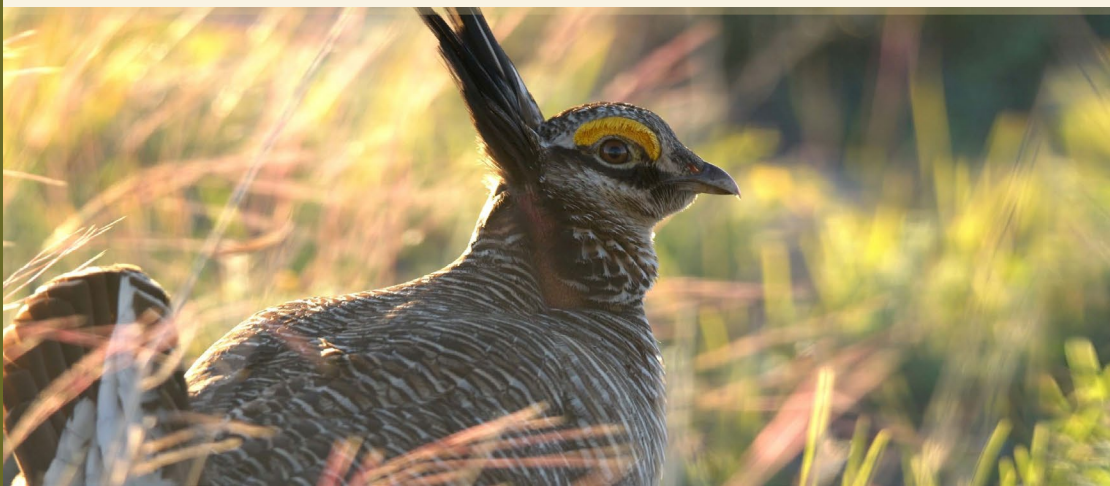
Habitat Conservation

Addresses the effects of oil & gas activities on lesser prairie-chicken and its habitat

35%
Permanent
Easements

65%
10-Year
Agreements

10,299 Habitat Acres Restored



INNOVATIVE APPROACHES TO ENERGY AND THE ENVIRONMENT

WAFWA's Oil & Gas CCAA is a 30-year agreement in which participating companies voluntarily agree to undertake management activities on enrolled non-federal lands to conserve the lesser prairie-chicken, prior to the species becoming federally listed.

In exchange for proactive conservation actions, the agreement provides its participants with assurance that if the species becomes listed then their permitted oil & gas activities may continue without further regulation, provided the company continues to implement the agreed-to management activities and follows the terms of their CCAA agreement.



Conservation Measures

Designed to promote avoidance and minimization of impacts to lesser prairie-chicken and its habitat, as well as mitigate any remaining habitat impacts

Biologically-Based

Incorporates habitat quality to quantify the impacts and improvements to habitat

2:1 Mitigation Ratio

Ensures 1 acre impact is offset by at least 2 acres of quality habitat conserved

2024

MITIGATED IMPACTS

19,448 Habitat Acres Impacted
(cumulative since the start of the program)

Habitat Quality = LOW

Habitat Quality Score: 0.35 (range 0.0-1.0)
with a stable trend of habitat quality

Majority (75%) of impacts occur in
low quality habitat (CHAT 3-4)

Percentage of leks observed within 1.25 miles: 4%
(64% of the habitat was surveyed)

12,500 Debit Units

CONSERVATION OFFSET

49,925 Habitat Acres Conserved
(provided in 2024)

Habitat Quality = HIGH

Habitat Quality Score: 0.71 (range 0.0-1.0)
with a trend of increased habitat quality

Majority (98%) of conservation occurs in
high quality habitat (CHAT 1-2)

Percentage of leks observed within 1.25 miles: 85%
(90% of the habitat was surveyed)

42,575 Credit Units

Credits Exceed Debits

by **71%**

*Conservation Efforts are
Greater than Impacts*



2024 Annual Report